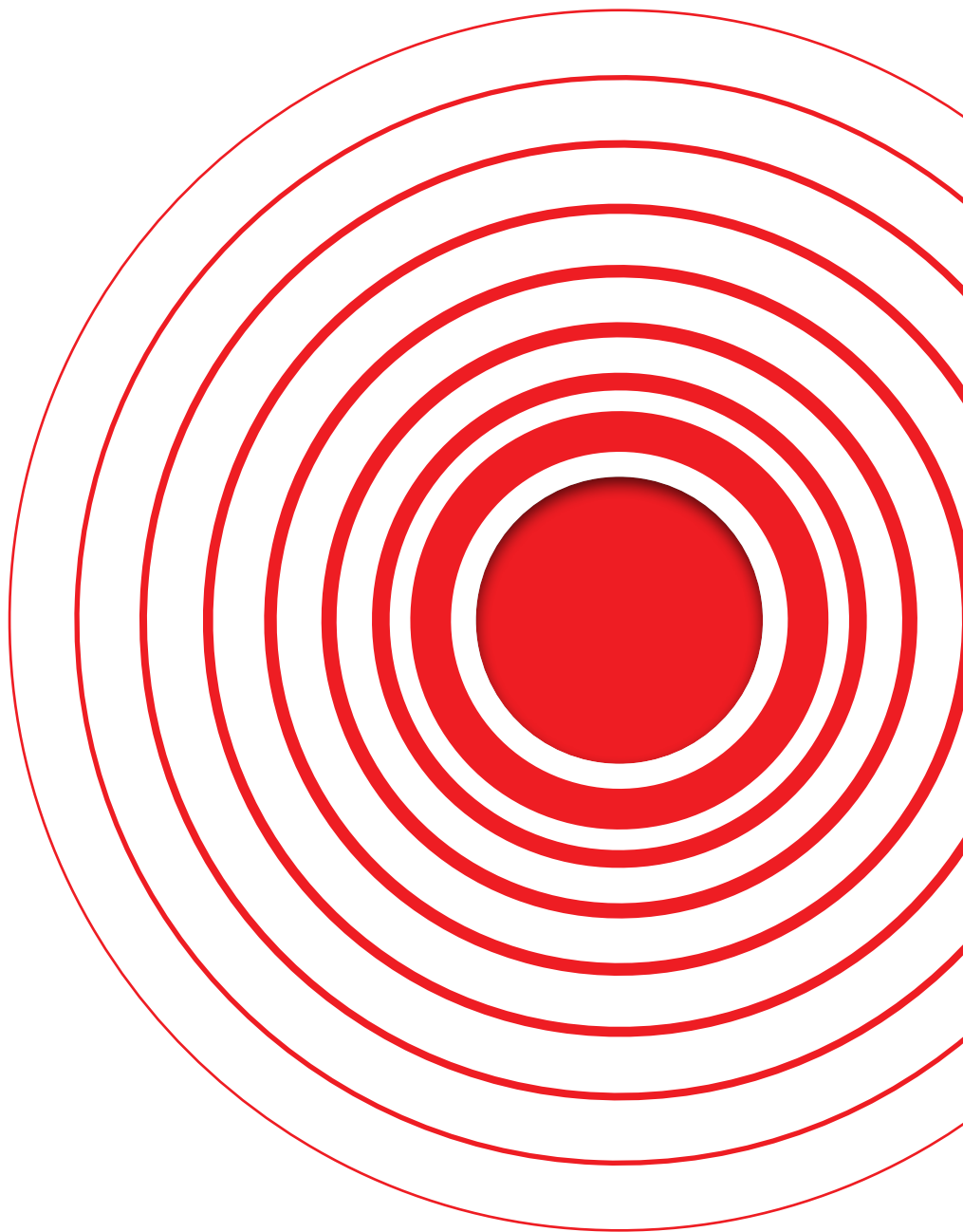




2020

Fire Alarm Systems

Product catalogue



TELETEK ELECTRONICS JSC IS A HIGH-TECH MANUFACTURER OF A FULL RANGE OF INTRUDER AND FIRE ALARM SYSTEMS

Already 29 years, we continue to search, develop and realize high performance products and solutions, combining our profound technological experience, strong production capacity, and the energy and passion of our people.

The heart of Teletek Electronics' success is its productive flexibility that is expressed not only in the wide production range but also in the ability to design and make specific and exclusive versions of the product in collaboration with the Customer. This important plus brings about obvious advantages, especially in the area of intruder and fire alarm systems where the elaboration process of a customized product is sometimes very hard.

Our company works with 2 hi-tech SMD lines consisting of DEK Ela screen, PHILIPS Topaz-X Pick and Place machines and Ersa Hotflow5 oven. With capability of placing over 30 000 components per hour, the pick-and-place machines enable our high skilled and motivated engineers to mount fine pitch components, BGA components and micro BGA components as well as Double-sided Reflow Soldering.

As recognition for its high quality and reliable production Teletek Electronics is awarded with ISO 9001:2015 Certificate.

What we have achieved for 29 years:

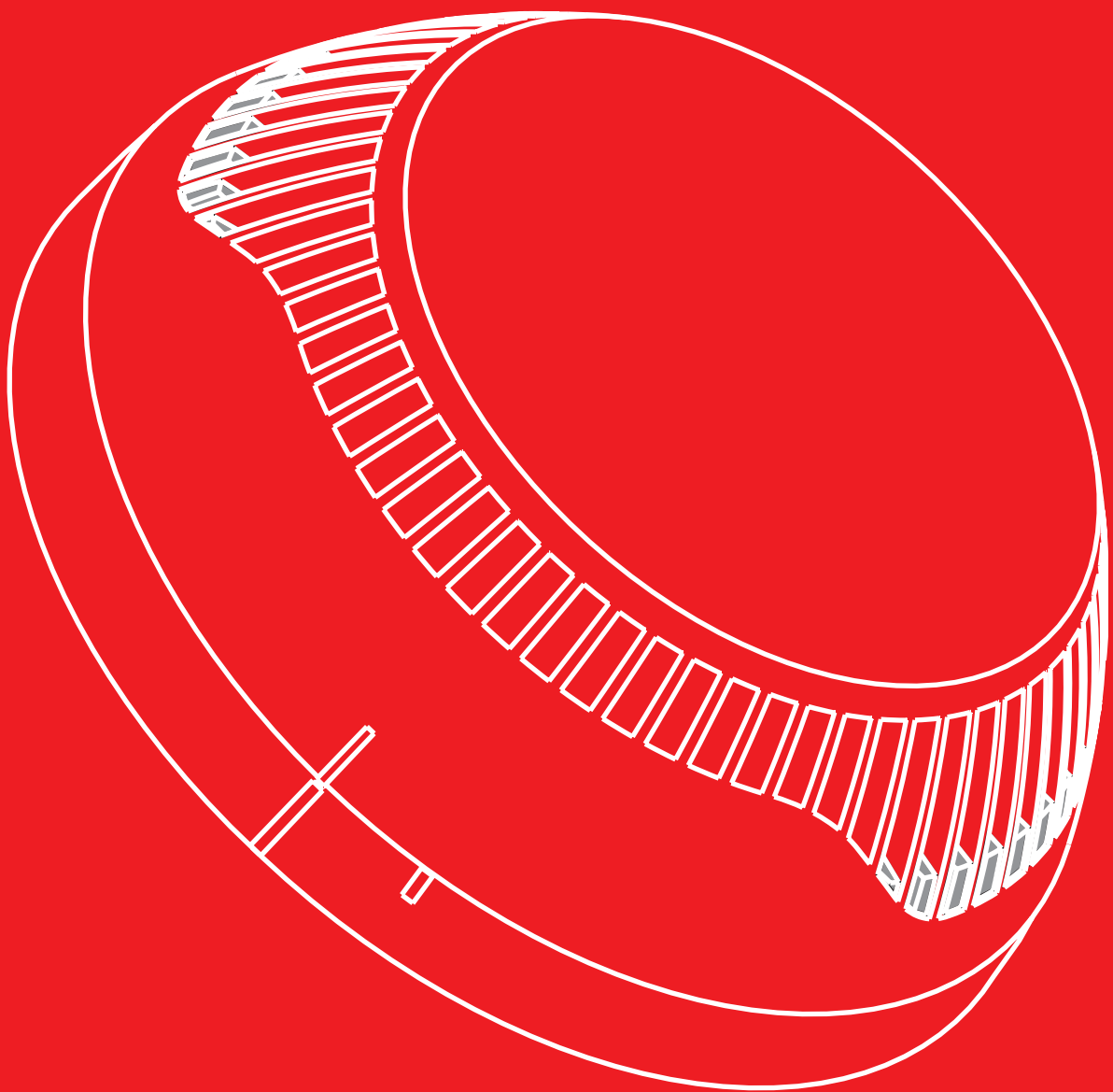
- Continuous innovation;
- More than 130 employees;
- Export in 75 countries;
- More than 30 million manufactured products;
- Almost a million buildings, secured by Teletek Electronics' systems.

We look forward to work, grow, explore and enjoy the next coming years!

2020



ADDRESSABLE FIRE ALARM SYSTEMS



IRIS /SIMPO

ADDRESSABLE PANELS



	IRIS PRO	IRIS	SIMPO
Loops	1-4	1 - 4	1 - 2
Devices per Loop	250	250	250
Expansion Loop Types	IRIS TTE/IRIS SS	IRIS TTE/IRIS SS	Simpo TTE
Galvanic Separation in Loops	Yes	Yes	No
Built-in isolator in Loops	Yes	Yes	Yes
Total number of devices per system	1000	1000	500
Zones	96	96	48
Multi language display	Yes	Yes	Yes
Redundant processor	Yes	Yes	No
Event Log	10 000	10 000	10 000
Day/Night Mode	Yes	Yes	Yes
Sounders/Strobes Synchronization	Yes	Yes	Yes
Display	320/240 touch screen	320/240 touch screen	4*40 symbols LCD
TCP/IP	Yes (built-in)	Yes (built-in)	No
Redundant network (RS485)	Yes (optional)	Yes (optional)	Yes (optional)
Battery	1x12V/18Ah	1x12V/18Ah	1x12V/18Ah
Monitoring of the internal battery resistance	Yes	Yes	Yes
Box	Metal	Metal with plastic cover	Metal
Color	Grey	White	Grey
Dimensions	430x330x117mm	441x331x80mm (bottom) 461x344x41mm (cover)	306x412x81mm
Flush mounting	No	Yes	No
Software Support	ProsTE/Observer	ProsTE/Observer	ProsTE/Observer
Standard	EN54 - 2/4	EN54 - 2/4	EN54 - 2/4

IRIS

ADDRESSABLE PANELS

- Up to 4 loops with up to 250 devices per loop
- Works with Teletek Electronics and System Sensor communication protocols

IRIS and IRIS PRO are addressable fire alarm panels with 1 to 4 loops and maximum coverage of 96 zones. Up to 250 devices can be connected to every system loop. The information for the system status is visualized on sensitive graphic display and LED indication for zones and troubles. With special "2 Steps of alarm level" working algorithm the false alarms are effectively minimized. The panels have a comprehensive day/night mode facility. The panels support two communication protocols: Teletek Electronics (IRIS TTE loop) and System Sensor (IRIS SS loop) according to the type of the used devices. Up to 64 IRIS/IRIS PRO panels can be connected in Ethernet or RS485 redundant network. The panels support operation with Observer monitoring software for IRIS panels connected in a network is available. Direct programming with ProsTE software.

IRIS



IRIS PRO



EN54 - 2/4

Technical Specifications

Main Power Supply	230VAC +10%/- 15%
Frequency	50/60Hz
Electrical output	7.0A
Internal resistance of the battery	<0.3 Ohm
Operating temperature	-5°C to +40°C
Weight (without battery)	6kg

Functional Features

Loops:	1 to 4
Devices per loop:	250 (TTE loop); 198 (SS loop)
Zones:	96
Back-up battery:	1, 12V/18Ah
Outputs:	4, monitored, relay type
Outputs (non-monitored, programmable, relay type):	4, 15A@24VDC
Programmable inputs/outputs:	Up to 250
Memory LOG:	10 000 events
Panels in Ethernet network (built-in TCP/IP):	Up to 64
Panels in RS485 redundant network (optional module):	Up to 64
Thermal printer:	Optional
Display:	320/240 touch screen
Multi language support of the software:	Yes
Programming:	ProsTE software
Standard:	EN54 - 2/4

IRIS PRO

ADDRESSABLE PANEL

- Compact design in a metal box suitable for arranging of modular structures
- Easy installation and maintenance

Specially designed box for building of modular structures when optional thermal printer and extra power supply are a must for the site installation. The boxes are easily mounted to each hiding all power and connection cables inside. The connected printer provides quick and easy printing to the panel's events log. The extra power unit accommodates additional back-up power for longer operation when the mains failures.



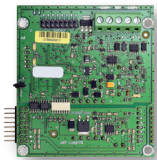
IRIS Printer

- Thermal printer in a metal box
- Suitable for modular structure
- Power supply 100-240VAC, 1.5A
- Serial interface RS-232C to IRIS PRO
- Paper width 80mm, valid print width 72mm
- Print speed max. 170mm/sec
- Self test and status indication
- Colour - grey
- Dimensions - 430x330x117mm



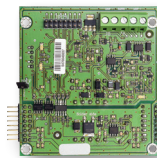
IRIS PS72

- Back-up power supply unit
- Suitable for modular structure with IRIS PRO
- Power supply 100-240VAC, 1.5A
- Place for 2 accumulator batteries 12V/18Ah (max. size of a battery 167x181x76mm)
- Colour - grey
- Dimensions - 430x330x117mm
- Certified to EN54-4



IRIS TTE Loop

- Loop Expander for 1 loop
- TTE protocol
- Supports SensoIRIS devices
- Max. consumption of the loop devices - 0.5A
- Max. number of devices in the loop - 250



IRIS SS Loop

- Loop Expander for 1 loop
- System Sensor protocol
- Supports System Sensor devices
- Max. consumption of the loop devices - 0.5A
- Max. number of devices in the loop - 198 (99 detectors + 99 devices)



IRIS/SIMPO Redundant module

- RS485 Network module
- The maximum length between two modules is 1000m



SIMPO

ADDRESSABLE PANEL

- Up to 2 loops with up to 250 devices per loop
- Entry level solution for smaller addressable installations

SIMPO is the perfect solution for your cost effective installations. It supports operation with up to two loops with coverage of 48 zones. 250 devices with Teletek Electronics protocol (SIMPO TTE Loop) could be connected to each loop. System status is visualized via LCD display and LED indication. Up to 64 SIMPO panels can be connected in RS485 redundant network or Ethernet network. Direct programming with ProsTE software is available. The panel comes in a metal casing with a multilingual LCD display and front foil for easier customizing.

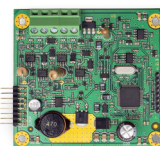
Technical Specifications

Main Power Supply	90 ÷ 264VAC
Frequency	47 ÷ 440Hz
Electrical output	4.2A
Internal resistance of the battery	<0.3 Ohm
Operating temperature	-5°C to +40°C
Weight (without battery)	4.2kg

Functional Features

Loops:	1 to 2 (TTE protocol)
Devices per loop:	250
Zones:	48
Back-up battery:	1, 12V/18Ah
Inputs:	3
Outputs: (monitored, relay type)	5
Outputs (non-monitored, programmable, relay type):	4, 15A@24VDC
Memory LOG:	10 000 events
Panels in RS485 redundant network (optional module):	Up to 64
Thermal printer:	Optional
Display:	4*40 symbols
Multi language support of the software:	Yes
Programming:	ProsTE software
Standard:	EN54 - 2/4

EN54 - 2/4



SIMPO TTE Loop

- Loop Expander for 1 loop
- TTE protocol
- Supports SensolRIS devices
- Max. consumption of the loop devices - 0.5A
- Max. number of devices in the loop - 250



IRIS/SIMPO Redundant module

- RS485 Network module
- The maximum length between two modules is 1000m



TTE LAN Communication module

- LAN Communication module
- Serial communication with the panel
- The module provides a connection between SIMPO panel and monitoring software Observer via ModBUS protocol
- 6 programmable inputs/outputs, OC type (up to 100mA each)

REPEATER

IRIS/SIMPO REPEATER PANEL

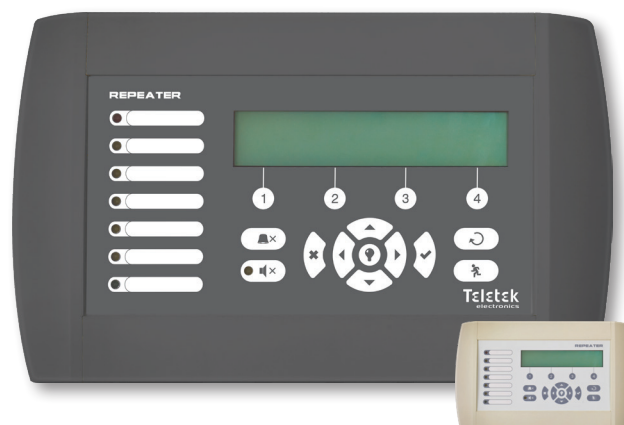
The Repeater panel is designed to display the events of the connected in redundant network IRIS, IRIS PRO and SIMPO addressable fire panels.

The Repeater panel is designed to work with Teletek Electronics' addressable fire alarm panels IRIS, IRIS PRO and SIMPO. It is used to display the events of the connected to the network addressable panels. The connection between the Repeater panel and addressable panels IRIS, IRIS PRO and/or SIMPO is via redundant network module. The maximum number of fire alarm panels in a network is 64. The maximum distance between two panels is up to 1000m. The information for events is visualized on LCD display and with LED indication for the system status. The Repeater panel has a built-in real time clock. Available micro USB for latest software and firmware updates.

Protocol type:	TTE
Panels in RS485 redundant network:	Up to 64
Network type:	Ring or line topology
Connection wires:	0.5-2.5mm ²
Max. length between two panels:	1000m
Memory LOG:	10 000 events
Display:	4*40 symbols
Multi language support of the software:	Yes
Color:	Grey, White

* The panel complies with the following standards:
EN54-2 - in case the repeater panel is connected to IRIS or SIMPO addressable panels in a redundant network
EN54-4 - in case the repeater panel is powered on with external power supply unit, which covers this standard

EN54 - 2/4*



Technical Specifications

Main power supply	24±4VDC
Frequency	50/60Hz
Max. consumption	0.11A
Operating temperature	-5°C to +50°C
Weight	0.77kg
Dimensions	200x330x48mm

IRIS/SIMPO

ANCILLARIES



SensolIRIS Programmer

- Programming tool
- Compatible with SensolIRIS detectors, sounders and modules
- Supports Teletek Electronics protocol
- Mobility in operation
- Multi language support
- Optional battery power supply 4x1.5V (not included)
- The kit includes: cables for programming SensolIRIS modules; AC-DC adapter

Loop Tester

- Loop and line diagnostic tool
- Easy location of short and break faults
- Auto-addressing support
- Compatible with SensolIRIS detectors, sounders and modules
- Supports Teletek Electronics protocol
- Mobility in operation
- Multi language support

SENSOIRIS

ADDRESSABLE DETECTORS



SensolRIS T110/T110 IS

- Fixed Temperature and Rate of Rise detector
- Supports Teletek Electronics protocol
- Class, selectable from the control panel - A1/R, A2/S, B/S
- Day/Night mode (programmable from the panel)
- Low profile design
- LED indication with 360° visibility
- Available with built-in isolator - SensolRIS T110 IS
- IP30

EN54-5
EN54-17



SensolRIS S130/S130 IS

- Optical smoke detector
- Supports Teletek Electronics protocol
- Sensitivity, selectable from the control panel - High/Normal/Middle/Low
- Day/Night mode (programmable from the panel)
- Low profile design
- LED indication with 360° visibility
- Available with built-in isolator - SensolRIS S130 IS
- IP30

EN54-7
EN54-17



SensolRIS M140/M140 IS

- Combined detector
- Supports Teletek Electronics protocol
- Class (in accordance with EN54-5) - A1/R
- Sensitivity (in accordance with EN54-7) - High/Normal/Middle/Low
- Day/Night mode (programmable from the panel)
- Low profile design
- LED indication with 360° visibility
- Available with built-in isolator - SensolRIS M140 IS
- IP30

EN54-5/7
EN54-17



SensolRIS B124

- Compatible with SensolRIS detectors and SensolRIS WSxx sounders
- Wire gauge for terminals - 0.4 - 2.0mm²
- Material (plastic), color - ABS, white



DeepBase W

- Deep base accessory
- Color - white (RAL 9016)
- Application for mounting on rough surfaces, pipelines, floating ceilings, etc
- Compatible with SensomAG detectors, SensolRIS detectors, SensolRIS WSxx and BSxx sounders, SF100 WSST sounder

SENSOIRIS

ADDRESSABLE CALL POINTS



SensolRIS MCP150

- Manual call point
- Supports Teletek Electronics protocol
- Type of the working element - resettable (flexible)
- Type (according to EN54-11) - A
- Built-in isolator
- Material (plastic), color - ABS, red
- Optional protective plastic cover
- IP40

EN54-11

EN54-17



SensolRIS MCP150 IP67

- Waterproof protected manual call point
- Supports Teletek Electronics protocol
- Built-in isolator module
- Surface mounting
- Resettable flexible element
- Type (according to EN54-11) - A
- LED indication
- Special test tool for resetting after alarm event
- Protective plastic cover
- Cable glands and o-ring protected sealant
- IP67 according EN 60529

EN54-11

EN54-17

EN60529



Call Point Plastic Cover Set

- Set of 5 pcs. protective plastic cover for manual call-points
- Compatible with SensolRIS MCP150 and SensolRIS MCP150 IP67



SensolRIS MCP150MR - Metal, powder-coated/Red

SensolRIS MCP150PR - Plastic, ABS/Red

SensolRIS MCP150PB - Plastic, ABS/Blue

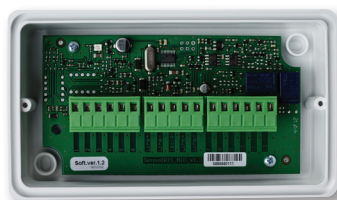
- Manual call points
- Supports Teletek Electronics protocol
- Working element (2 elements): frangible (a break glass) and operating (a button)
- Type (according to EN54-11) - B
- Built-in isolator
- Special key for opening
- Auto-reset at door closing

EN54-11

EN54-17

SENSOIRIS

ADDRESSABLE MODULES

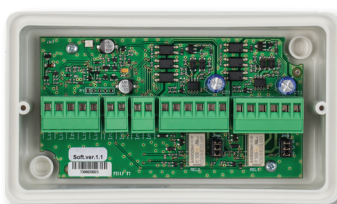


SensolRIS MIO

- Input/output modules: MIO22 (2 IN/2 OUT); MIO04 (4 OUT); MIO40 (4 IN)
- Placed in plastic box with transparent cover for easy inspection
- Built-in isolator
- Loop powered
- IP40
- Available in version with IP55 protected box (SensolRIS MIOXX IP55)

EN54-18

EN54-17



SensolRIS MIO22M

- Module with 2 inputs and 2 monitored outputs
- Supports Teletek Electronics protocol
- Two operation modes for the outputs: monitored and non-monitored
- Placed in plastic box with transparent cover for easy inspection
- Built-in isolator
- Loop powered
- IP40
- Available in version with IP55 protected box (SensolRIS MIO22M IP55)

EN54-18

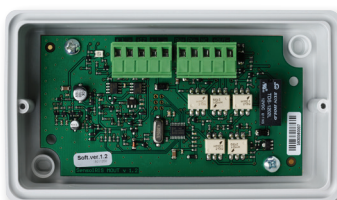
EN54-17



SensolRIS MC-Z

- Conventional zone module
- Supports Teletek Electronics protocol
- Interface between a zone of conventional detectors and loop expander
- Placed in plastic box with transparent cover for easy inspection
- Built-in isolator
- Loop powered
- IP40
- Available in version with IP55 protected box (SensolRIS MC-Z IP55)

EN54-18



SensolRIS MOUT

- Potential output for conventional sounders
- Supports Teletek Electronics protocol
- Interface between a zone of conventional sounders and loop expander
- Placed in plastic box with transparent cover for easy inspection
- Built-in isolator
- IP40
- Available in version with IP55 protected box (SensolRIS MOUT IP55)

EN54-18

EN54-17



SensolRIS MOUT - 240

- Electrical mains switching output
- Supports Teletek Electronics protocol
- Suitable for control of 240VAC voltage circuits
- Placed in plastic box with transparent cover for easy inspection
- Built-in isolator
- Loop powered
- IP40
- Available in version with IP55 protected box (SensolRIS MOUT-240 IP55)

EN54-18



SensolRIS MINP M

- Mini module with one monitored input
- Used for connection of external control devices, gas detection, panic switches, etc
- Compact size for built-in mounting
- Supports Teletek Electronics protocol

EN54-18



SensolRIS MISO

- Isolator module
- Placed in plastic box with cable running holes for easy installation
- Supports Teletek Electronics protocol
- IP40

EN54-17

SENSOIRIS

ADDRESSABLE SOUNDERS/STROBES



SensolIRIS WSOU/WSOU IS

- Wall mount sounder
- Two sound levels - LOW: 82-92dB; HIGH: 100-103dB
- Up to 60 (LOW sound level) / 30 (HIGH sound level) sounders per loop
- 32 tone types selectable from the panel
- Supports Teletex Electronics protocol
- Loop synchronization for better alarm signal
- Loop powered
- Color - red
- Available in version with built-in isolator (SensolIRIS WSOU IS)
- IP21C, type A

EN54-3
EN54-17



SensolIRIS WS/WS IS

- Wall mount sounder and strobe
- Two sound levels - LOW: 80-88dB; HIGH: 92-98dB
- Up to 60 (LOW sound level) / 30 (HIGH sound level) sounders per loop
- 32 tone types selectable from the panel
- Supports Teletex Electronics protocol
- Loop synchronization for better alarm signal
- Loop powered
- Color - red, transparent
- Available in version with built-in isolator (SensolIRIS WS IS)
- IP43C, type B

EN54-3



SensolIRIS WSST/WSST IS EN54-23

- Wall mount sounder and strobe - Visual Alarm Device (VAD)
- Two sound levels - LOW: 80-88dB; HIGH: 92-98dB
- Up to 60 (LOW sound level) / 30 (HIGH sound level) sounders per loop
- 32 tone types selectable from the panel
- Supports Teletex Electronics protocol
- Loop synchronization for better alarm signal
- Loop powered
- Color - white, transparent
- Available in version with built-in isolator (SensolIRIS WSST IS EN54-23)
- IP21C, type A
- Coverage volume: Open class

EN54-3/23
EN54-17



SensolIRIS WSB IP65

- Waterproof protected deep base
- Wall mounting
- SensolIRIS B124 standard base factory mounted
- Installation wires - 3mm²
- Cable glands and o-ring protected sealant
- IP65 according EN 60529
- Compatible with SensolIRIS WSxx wall sounders



DeepBase W

- Deep base accessory
- Color - white (RAL 9016)
- Application for mounting on rough surfaces, pipelines, floating ceilings
- Compatible with SensomAG detectors, SensolIRIS detectors, SensolIRIS WSxx and BSxx sounders, SF100 WSST sounder



DeepBase R

- Deep base accessory
- Color - red (RAL 3020)
- Application for mounting on rough surfaces, pipelines, floating ceilings
- Compatible with SensolIRIS WSxx sounders, SF100 RSST/RSND sounders

SENSOIRIS

ADDRESSABLE SOUNDERS/STROBES

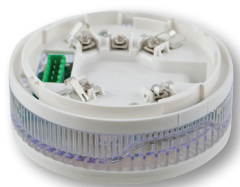


SensolRIS BSOU/BSOU IS

- Base with built-in sounder, compatible with SensolRIS detector series
- Suitable for wall or ceiling mounting
- Two sound levels - LOW: 82-92dB; HIGH: 100-103dB
- Up to 100 (LOW sound level) / 30 (HIGH sound level) sounders per loop
- 32 tone types selectable from the panel
- Supports Teletek Electronics protocol
- Loop synchronization for better alarm signal
- Loop powered
- Color - white
- Available in version with built-in isolator (SensolRIS BSOU IS)
- IP21C, type A
- Optional cover when the base is used only as a sounder

EN54-3

EN54-17



SensolRIS BSST/BSST IS

- Base with built-in sounder and strobe, compatible with SensolRIS detector series
- Two sound levels - LOW: 82-92dB; HIGH: 100-103dB
- Up to 100 (LOW sound level) / 30 (HIGH sound level) sounders per loop
- 32 tone types selectable from the panel
- Supports Teletek Electronics protocol
- Loop synchronization for better alarm signal
- Loop powered
- Color - white, transparent
- Available in version with built-in isolator (SensolRIS BSST IS)
- IP21C, type A
- Optional cover when the base is used only as a sounder

EN54-3

EN54-17



Sounder Plastic Cover Set

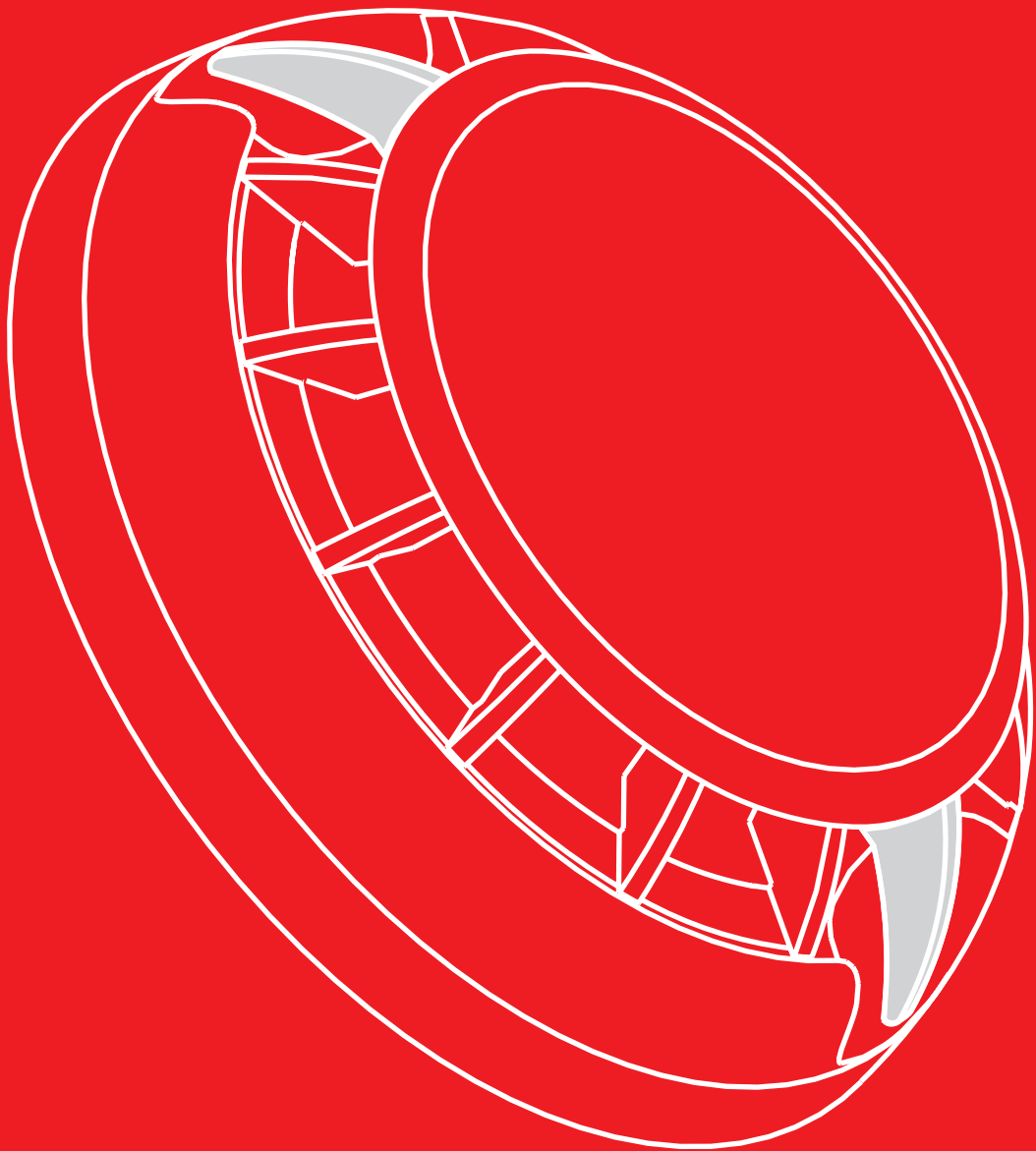
- Protective plastic cover
- For application with bases SensolRIS BSxx when the device is used only as a sounder
- Set of 5 pcs. protective plastic cover for sounders



DeepBase W

- Deep base accessory
- Color - white (RAL 9016)
- Application for mounting on rough surfaces, pipelines, floating ceilings, etc
- Compatible with SensomAG detectors, SensolRIS detectors, SensolRIS WSxx and BSxx sounders, SF100 WSST sounder

CONVENTIONAL FIRE ALARM SYSTEMS



MAG SERIES

CONVENTIONAL PANELS

EVPU[®]



MAG2

MAG4

MAG8

MAG8Plus

Zones	2	4	8	8-16
Devices	32 per zone*	32 per zone*	32 per zone*	32 per zone*
Double knock	No	No	Yes	Yes
Sounder output	2 [0.3A]	2 [0.3A]	2 [0.5A]	4 [0.3A]
Fire relay	Yes	Yes	Yes	Yes
Fault relay	Yes	Yes	Yes	Yes
AUX output	Yes [0.3A]	Yes [0.3A]	Yes [0.3A]	Yes [0.3A]
Sounder delays	No	No	Yes	Yes
Instant zone	No	No	Yes	Yes
Indication	LED	LED	LED	LED
Access protection	Key	Key	Key	Key
Plastic box/Metal box	Yes/Yes	Yes/Yes	Yes/No	Cover: plastic, Bottom: metal
Zone expander	No	No	No	Yes
Sounder expander	No	No	No	Yes
LOG module	No	No	Yes	Yes
Relay expander	No	No	Yes	Yes
Battery	1x12V/7Ah	1x12V/7Ah	1x12V/7Ah	1x12V/18Ah
Standard	EN54 - 2/4	EN54 - 2/4	EN54 - 2/4	EN54 - 2/4

* with SensoMAG detectors

MAG2/4/8

CONVENTIONAL PANELS

EN54 - 2/4

MAG2, MAG4 and MAG8 are conventional fire detection and indication panels certificated by EN54-2/4. MAG2 maintains 2 fixed zones with fire detectors and call points; MAG4 maintains 4 fixed zones and MAG8 - 8 fixed zones.

The MAG2, MAG4 and MAG8 panels have small size, handy cabinet, internal self-testing for technical faults.

Easy for installation and maintenance, user-friendly and simple operation - that makes the MAG fire panels suitable for home, small and middle office applications.

Zones:

- MAG2 2 fixed zones
- MAG4 4 fixed zones

Devices per zone: 32

Back-up battery: 1, 12V/7Ah

Sounder outputs: 2, monitored, 0.3A each

AUX output: 24VDC/0.3A fuse

Multi language support: Yes



MAG2



MAG2P



MAG4



MAG4P

Functional Features

- Active EOL allowing continuous monitoring of inputs
- Levels of access protected by means of key
- Easy operation and maintenance
- Metal or plastic box

Technical Specifications

Main Power Supply230VAC \pm 10%
 Current consumption (mains failure)50mA
 Internal resistance of the battery<1.6 Ohm
 Operating temperature-5°C to +40°C
 Weight (without battery) MAG22.7kg (m); 2.1kg (p)
 Weight (without battery) MAG43.5kg (m); 2.1kg (p)
 Dimensions of the metal box (MAG2)200x290x80mm
 Dimensions of the metal box (MAG4)320x220x80mm
 Dimensions of the plastic box.....340x290x100mm

Zones: 8 fixed zones

Devices per zone: 32

Back-up battery: 1, 12V/7Ah

Sounder outputs: 2, monitored, 0.5A each

Multi language support: Yes

Double knock mode: Yes

Sounders delay: 1-10 min, Programmable



MAG8

Functional Features

- Supports relay expander MR8 and LOG module ML
- Active EOL allowing continuous monitoring of inputs
- Levels of access protected by means of key
- Easy operation and maintenance
- Simple programming by means of jumpers
- Plastic box

Technical Specifications

Main Power Supply230VAC \pm 10%
 Current consumption (mains failure)125mA
 Auxiliary output.....24VDC/0.3A fuse
 Internal resistance of the battery<0.45 Ohm
 Operating temperature-5°C to +40°C
 Weight (without battery)2.4kg
 Dimensions of the plastic box.....340x290x100mm

MAG8PLUS

CONVENTIONAL PANEL

- Expandable 8 to 16 zones
- Supports up to 32 detectors and call points per zone

MAG8Plus is a conventional fire detection and indication panel certificated by EN54-2/4. The panel maintains from 8 to 16 zones with fire detectors and call points. MAG8Plus is based on a modular principle - a power unit, a control panel, zone/sounder expanders, an indication module and battery space. A detailed LED indication shows the status of the system, divided into two groups - for technician level and for monitor and observer level.

The MAG8Plus is suitable for vast range of applications - big office buildings, schools, supermarkets, etc.

EN54 - 2/4

Zones:	8, expandable to 16
Devices per zone:	32
Back-up battery:	1, 12V/18Ah
Sounder outputs:	4, monitored, 0.3A each
Multi language support:	Yes
Double knock mode:	Yes
Sounders delay:	1-10 min, Programmable



Functional Features

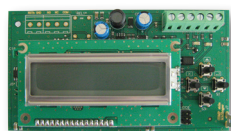
- Supports relay expander MR8 and LOG module ML
- Active EOL allowing continuous monitoring of inputs
- Levels of access protected by means of key
- Simple programming by means of jumpers

Technical Specifications

Main Power Supply230VAC \pm 10%
Current consumption (mains failure)260mA*
Auxiliary output24VDC/0.3A fuse
Operating temperature-5°C to +40°C
Weight (without battery)4kg
Dimensions of metal bottom441x331x80mm
Dimensions of plastic cover461x344x45mm

* with connected 4 zone expander modules

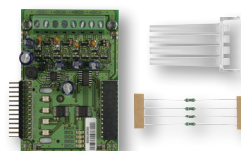
ML



- LOG module for recording and viewing of events
- Compatible with MAG8 and MAG8Plus*
- Memory for 8190 events
- Operation keypad with 4 buttons
- LCD display with backlight
- Multi language menus

* Built-in installation in MAG8Plus fire alarm panel.
For installation with MAG8 fire alarm panel, the module is mounted into compact small plastic box SB-U with transparent cover. The SB-U box is sold separate.

MS 4



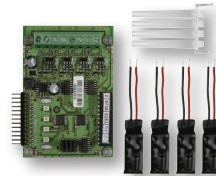
- 4 sounder outputs expander module
- Compatible with MAG8Plus

MR 8



- 8 relay expander module
- Compatible with MAG8 and MAG8Plus
- 1A/12V or 0.5A/24V

ME 4



- 4 zone expander module
- Compatible with MAG8Plus

- Conventional Fire Extinguishing Panel
- 2 zones for extinguishing and 1 conventional fire alarm zone

IVY is a conventional fire extinguishing control panel certificated by EN54-2/4 and EN12094-1 standards. The panel is designed for using together with systems for gas, powder, aerosol, water and other types of active extinguishing.

IVY has 3 hardwired zones - 2 for activation of automatic fire detectors and 1 conventional fire zone. Automatic and manual operation modes (selectable via 3 positional key lock) allow the operators to choose the extinguishing process control. The extinguishing process can be activated also manually with a special button on the front panel.

The IVY conventional panel is designed for extinguishing in one zone and can operate with solenoids, pressostats and other kind of actuators.

Optional LOG module for reviewing of recorded memory events (up to 1000 events) can be included in the system configuration.

EN12094-1, EN54 - 2/4

Technical Specifications

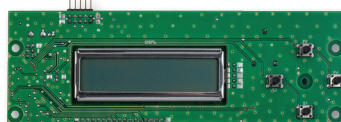
Main Power Supply	110-230VAC ±10%
Frequency	47-60Hz
Electrical output	26VDC; 1.5A
Consumption	0.3A@230VAC; 0.7A@110VAC
Internal resistance of the battery	<0.3 Ohm
Operating temperature	-5°C to +40°C
Weight (without batteries)	~3.2kg
Dimensions	324x314x82mm

Functional Features

Zones:	3 (2 for extinguishing + 1 conventional fire alarm)
Devices per zone:	32
Back-up battery:	2, 12V/7Ah (serial connection)
Sounder outputs: (monitored, potential)	2, 0.3A each
Extinguishing output: (monitored, potential)	1A@5min/3A@20ms
Inputs: (monitored)	6
Inputs: (non-monitored, relay)	3
Inputs, OC type: (non-monitored)	4
Display:	2-digit, 7-segment, LED
Multi language support:	Yes
Standard:	EN12094-1; EN54 - 2/4



IVY ML



- Optional LOG memory module for IVY panel
- Built-in mounting into the panel's box
- Memory for 1000 events
- Operation keypad with 4 buttons
- LCD display with backlight
- Multi language menus



SensoMAG MRB50

- Manual Release Button
- For activation of the extinguishing
- Protective transparent cover
- Resettable flexible element
- Color - yellow



SensoMAG MHB50

- Emergency Stop Button
- For emergency stop of the gas extinguishing system
- Protective transparent cover
- Color - blue

SENSOMAG

CONVENTIONAL DETECTORS



SensoMAG F10

EN54 - 5

- Fixed heat detector
- Detects temperatures over 60°C, class A2/S (SensoMAG F10A)
- Detects temperatures over 75°C, class B/S (SensoMAG F10B)
- Digital processing algorithm
- Low profile design
- LED indication with 360° visibility
- Sensor status indication on every 8 seconds



SensoMAG R20

EN54 - 5

- Rate-of-rise heat detector
- Detects temperatures above 58°C or rapid change in temperature for a period of time, class A1/R
- Digital processing algorithm
- Low profile design
- LED indication with 360° visibility
- Sensor status indication on every 8 seconds



SensoMAG S30

EN54 - 7

- Optical-smoke detector
- Auto compensation
- Digital processing algorithm
- Low profile design
- LED indication with 360° visibility
- Sensor status indication on every 8 seconds
- Rubber gasket ring for increased protection of the smoke chamber



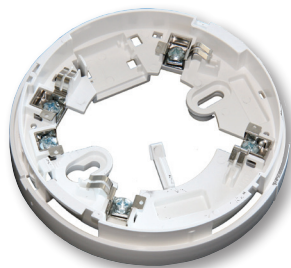
SensoMAG M40

EN54 - 5/7

- Combined detector (Optical-smoke and Rate-of-rise), class A1/R
- Auto compensation
- Digital processing algorithm
- LED indication with 360° visibility
- Sensor status indication on every 8 seconds
- Rubber gasket ring for increased protection of the smoke chamber

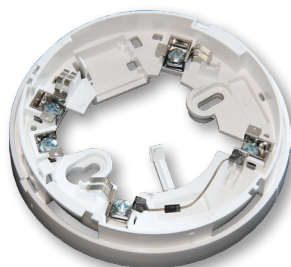
SENSOMAG

CONVENTIONAL FIRE BASES



SensomAG B24

- Standard 24V base for SensomAG detectors
- Compatible with fire panels with alarm state current up to 15mA



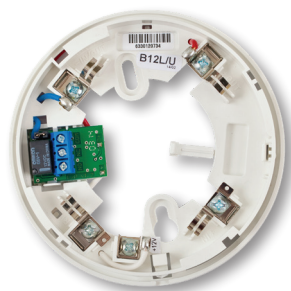
SensomAG B24D

- Standard 24V base with Schottky diode for SensomAG detectors
- Detects removal of detector from base
- Compatible with fire panels with alarm state current up to 15mA



SensomAG B24RD

- Standard 24V base with Schottky diode and increased alarm state current for SensomAG detectors
- Detects removal of detector from base
- Compatible with fire panels with alarm state current from 45mA and higher



SensomAG B12L/U

- Relay 12V base
- For application in intruder alarm system
- Latched/Unlatched mode



DeepBase W

- Deep base accessory
- Color - white (RAL 9016)
- Application for mounting on rough surfaces, pipelines, floating ceilings, etc
- Compatible with SensomAG detectors, SensolRIS detectors, SensolRIS WSxx and BSxx sounders, SF100 WSST sounder

SENSOMAG

CONVENTIONAL CALL POINTS



SensoMAG MCP50

EN54 - 11

- Manual call point
- Surface mounting
- Resettable flexible element
- LED indication
- Special test tool for resetting after alarm event
- Optional protective plastic cover
- IP40



SensoMAG MCP50 IP67

EN54 - 11

EN 60529

- Waterproof protected manual call point
- Surface mounting
- Resettable flexible element
- Type (according to EN54-11) - A
- LED indication
- Special test tool for resetting after alarm event
- Protective plastic cover
- Cable glands and o-ring protected sealant
- IP67 according EN 60529



Call Point Plastic Cover Set

- Set of 5 pcs. protective plastic cover for manual call-points
- Compatible with SensomAG MCP50 and SensomAG MCP50 IP67

SOUNDERS

CONVENTIONAL, INDOOR



SF 100 WSST

- Indoor fire alarm wall sounder and strobe
- Piezo sounder
- LED strobe
- Two sound levels: HIGH - 100dB; LOW - 92dB
- Low profile design
- Max. consumption 25mA@24VDC
- 32 Sound types
- 2 Outputs for evacuation and fire alarm
- Two-wire connection
- Color - white, transparent

EN54 - 3/ 23



SF 100 RSST

- Indoor fire alarm wall sounder and strobe
- Piezo sounder
- LED strobe
- Two sound levels: HIGH - 100dB; LOW - 92dB
- Low profile design
- Max. consumption 25mA@24VDC
- 32 Sound types
- 2 Outputs for evacuation and fire alarm
- Two-wire connection
- Color - red, transparent

EN54 - 3



SF 100 RSND

- Indoor fire alarm sounder
- Piezo sounder
- Two sound levels: HIGH - 100dB; LOW - 92dB
- Low profile design
- Max. consumption 22mA@24VDC
- 32 Sound types
- 2 Outputs for evacuation and fire alarm
- Two-wire connection
- Color - red

EN54 - 3



SF 105

- Indoor fire alarm sounder
- Piezo sounder
- Sound output - 105dB
- LED strobe
- Plastic case
- Power supply - 24V
- Two-wire connection
- Current - 80mA
- Color - red

EN54 - 3



DeepBase W

- Deep base accessory
- Color - white (RAL 9016)
- Application for mounting on rough surfaces, pipelines, floating ceilings
- Compatible with SensoMAG detectors, SensoIRIS detectors, SensoIRIS WSxx and BSxx sounders, SF100 WSST sounder



DeepBase R

- Deep base accessory
- Color - red (RAL 3020)
- Application for mounting on rough surfaces, pipelines, floating ceilings
- Compatible with SensoIRIS WSxx sounders, SF100 RSST/RSND sounders

SOUNDERS

CONVENTIONAL, OUTDOOR



SF 200

- Outdoor fire alarm siren
- LED strobe
- 1 status indicator
- Sound output - 96dB
- Power supply - 20-30VDC
- Plastic case
- IP54 protection for the electronic part
- Current consumption - <17mA@24V
- Color - red

EN54 - 3



SF 300

- Outdoor fire alarm siren
- IP44 protection for the electronic part
- Type B
- LED strobe
- Two piezo sounders
- Sound output - 95dB@1m
- Power supply - 20-30VDC
- Plastic case
- Current consumption - <28mA@24VDC
- Color - red

EN54 - 3

ACCESSORIES

FIRE ALARM SYSTEMS



FRL - 1

- Remote 24V fire indicator
- Repeats the status of 1 or several fire detectors (up to 3 SensoMAG or SensolRIS detectors)
- 1 input
- Complies with EN54-23



DeepBase W

- Deep base accessory
- Color - white (RAL 9016)
- Application for mounting on rough surfaces, pipelines, floating ceilings, etc
- Compatible with SensoMAG detectors, SensolRIS detectors, SensolRIS WSxx and BSxx sounders, SF100 WSST sounder



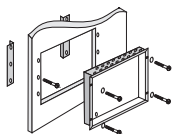
DeepBase R

- Deep base accessory
- Color - red (RAL 3020)
- Application for mounting on rough surfaces, pipelines, floating ceilings, etc
- Compatible with SensolRIS WSxx sounders, SF100 RSST/RSND sounders



Fireray One

- Reflective smoke beam detector
- Auto-alignment protocol
- Operating voltage: 14 - 36VDC
- Operating current: 5mA
- Low current consumption
- Signal output: Individual Alarm and Fault relays (VFC0) 2A @ 30 VDC
- Operating distance: 5 - 120m (for 5-50m - one reflector is required; for 50-120m - 4 reflectors are required)
- Suitable for installation into large and small places
- IP55
- Certified to EN54-12



FLM Kit

- Kit for flush mounting
- For use on 25 mm thick dry wall
- Includes: 2 hangers, mounting screws
- Compatible with IRIS and MAG8Plus



PS2410

- Power supply unit
- 24 VDC/1A
- Metal box
- Transformer
- Complies with EN54-4



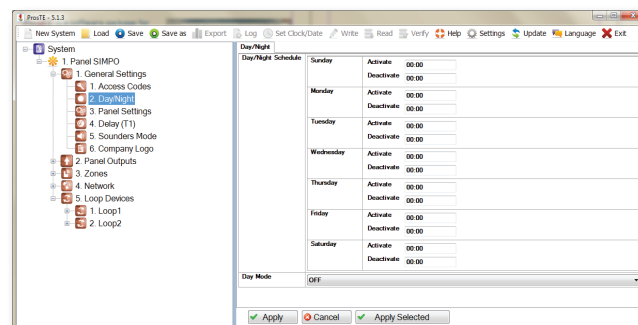
SB-U

- Universal small plastic box
- For application with ML log memory module in installation with MAG8 fire alarm panel
- Transparent cover for easy visual inspection

ProSTE

PROGRAMMING SOFTWARE

ProSTE is a software package for programming of Teletek Electronics intruder and fire alarm panels. The software allows fast and user-friendly programming.



ProsTE Advantages

- Intuitive and user friendly graphic interface
- Easy programming of all system parameters
- Saves time and effort
- Allows creation of default configurations in TDF (Teletek data files) ready for use on site
- Decreases possibility for mistakes during programming
- No need to remember addresses or use programming manuals
- Download and update available at www.teletek-electronics.com
- Multi language support
- Help wizard

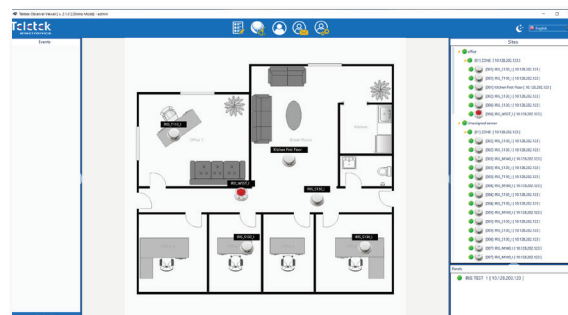
Supported products

- Eclipse 8/16/32/99
- BRAVO Wireless panel
- IRIS
- SIMPO
- IRIS/SIMPO Repeater
- ARGUS
- TTE GPRS Standard
- TTE GPRS Simple
- TTE LAN
- TTE Combo
- TP2000 (ver. 8.xx)

OBSERVER

MONITORING SOFTWARE

Observer is a software application for monitoring of sites equipped with burglary or fire alarm panels produced by Teletek Electronics JSC.

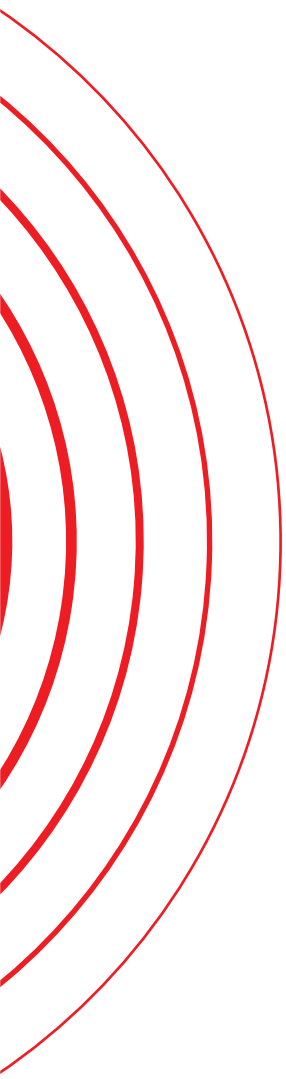


Functional Specifications

- Supported panels for operation: ECLIPSE Series, IRIS Series, SIMPO, BRAVO
- Supports up to 64 panels ECLIPSE, BRAVO, IRIS and SIMPO - up to 1000 devices per IRIS panels, up to 500 devices per SIMPO panel, up to 30 devices per ECLIPSE panel (depends on the panel's model), up to 16 devices per BRAVO panel
- Monitors the condition and state of SensiRIS fire detectors (Alarm, Normal, Fault) and Area(s) in ECLIPSE/BRAVO panels
- Shows full information about the fire detector in alarm state - zone, name, etc
- Monitors faults in the panel - Low Batt, AC Loss, etc
- Allows control over the Fire alarm panel - silence buzzer, silence sounders, evacuation, reset
- Allows control over the ECLIPSE/BRAVO alarm panel - Arming /Full, Stay, Sleep/, Disarming, Zone Bypass, PGM outputs switch ON/OFF
- Allows import of architectural plans and pictures on which the detectors are placed (JPG, BMP, PNG, TIF, GIF)
- Keeps printable event log
- Signals visually and audibly in case of alarm or fault
- ModBus protocol included

Observer Advantages

- Integrated video verification with third-party video systems
- Direct ProsTE files import (Device name, zone name, panel name and panel IP address)
- Devices Drag and drop placement
- Panels control
- Minimum programming
- Simple and User Friendly Interface
- Windows 7/8.1/10 support
- Multi language support
- Protection by means of password and hardware key (Dongle)
- Event audio signalization





[www.
teletek-electronics
.com](http://www.teletek-electronics.com)

a: "Srebarna" 14A Str, Sofia - 1407, BULGARIA
t: (+359 2) 9694 800
f: (+359 2) 962 52 13
e: info@teletek-electronics.bg



08/2020